

2024 Yanmar America Eventing Series at
Tryon International:

Tryon International Three-Day Event



Tryon.com/Eventing | May 8-12, 2024

MAKE THE MOST OF YOUR LAND



Take your tractor's productivity to the next level this year.

Whether you are mowing fields, harvesting hay, or cleaning barns, Yanmar tractors provide a rugged, stable platform for the work you need to do.

Powered by Yanmar's famously reliable diesel engines, Yanmar tractors deliver a unique combination of power and fuel efficiency. And the operator platform was designed with you in mind. It's easy to climb on and off, the seat is comfortable, and the instruments and controls are at your fingertips.



YANMAR TRACTOR MODELS

SA Series 21 & 24 HP • YT2 Series 35 HP ROPS & cab • YT3 Series 47 & 59 HP ROPS & cab • YM Series 41, 46 & 59 HP ROPS



To learn more and find your local dealer, visit us at yanmartractor.com or scan QR code



EVENT STAFF & OFFICIALS

Honorary President

Co-Organizer

Co-Organizer

Event Staff

Secretary

FEI PGJ - 4*-L/4*-S

FEI GJ - 4*-L/4*-S

FEI GJ - 4*-L/4*-S

FEI PGJ 3*-L/2*S/ 1*

FEI GJ 3*-L/2*S/ 1*

FEI GJ 3*L/ 2*S/ 1*

FEI PGJ - 3*S/ 2*-L

FEI GJ - 3*S/ 2*-L

FEI TD - 4*L & 4S, 1*

FEI TD - 3* L/S

FEI TD 2*/1*

FEI Vet Delegate

FEI Associate Vet

FEI Chief Steward

FEI Steward

FEI Steward

FEI Steward

FEI Steward

FEI Steward

XC CD-4*S/L

XC CD-3*S/2*S and L/1*

Show Jumping CD

XC CD 3*L

Stable Manager

FEI Steward

Sharon Decker

Shelley Page

Max Corcoran

Zully Martinez

Rick Dunkerton

Kiki Klingspor

Peter Gray

Jo Young

Bea DiGrazia

Marilyn Payne

Debbie Adams

Valerie Pride

Robyn Fischer

Kristf Verlinden

Tim Murray

Gale Fox

Debbie Williamson

Nancy Carr

Travis Page

Beth Davidson

Angela Hasz

Dana Diemer

Manuel Diemer

Patricia Scott

Helen West

Beth Perkins

Bernardo Cabral

Jeff Kibbe

Danny Moguel

Cathy Baker

LOVE THE HORSE FIRST

BECOME A MEMBER SECOND



THREE PHASES, TWO PARTNERS, ONE GOAL
#BetterTogether | www.useventing.com

THANK YOU TO OUR INCREDIBLE VOLUNTEER TEAM! WE COULDN'T DO THIS WITHOUT YOU!

Joanne Alderman
Michael Allen
Michael Axelrod
Roberta B. Axelrod
Diane Ayers
Jan Bellows
Barb Bennett
Kat Brinnier
Katherine Brooks
Carolyn Cadier
Edith Cahoon
Summer Carpenter
Sheila Chesney
Rachel Childers
Laura Clark
Nicole Crouch
Romona Czarnecki
Jimmy Dancy
Megan David
Erin Earl
Pamela Epperson Martin
Laura Eyre
Bess Freeman
Ellen Golda
Paulette Griffin
Denise Hansard
Janice Hargett
Cyndie Harrell
Holly Hixson
Robin Hnat
Rob Holland
Lucy Hooper
Phillip Hudson
Heather Johnson
Luanne Johnson
John Kern

Abby Kogler
Lydia Kolbas
Mary Kuzman
Elena Kuzmenko
Susan Levy
Jane Lynch
Terry Lynch
Dianne Mackert
Ed Mancuso
Casey McMahon
Kathryn McMahon
Heidi McRae Ashton
Kimberlee Meeks
Mary Pat Monteith
Christina Moody
Jeremy Moody
Cynthia Mulligan
Judy Ogg
Emily Osborne
Mary Parker
Deb Pasco-Jundt
Madison Penson
Nina Rader
Diane Reid
Carroll Rush
Laurie Schrock
Beverly Semon
Debbie Stith
Camie Stockhausen
Brian Tribby
Ann Troppmann
Jim Troppmann
Clyde Younkin
Donna Younkin
Elizabeth Paige Younkin



FAIRFAX & FAVOR

ENGLAND



FAIRFAXANDFAVOR.COM

PROVISIONAL COMPETITION SCHEDULE

THURSDAY, MAY 9TH

DRESSAGE

| | | |
|--------------------------------|-------------|---------------------|
| INTERNATIONAL STADIUM - RING A | 8:30-9:40 | CCI 4*-S |
| | 10:00-11:15 | CCI 4*-S |
| | 11:35-12:10 | CCI 4*-S |
| | 13:00-14:10 | CCI 4*-L |
| | 14:30-15:05 | CCI 4*-L |
| INTERNATIONAL STADIUM - RING B | 8:30-9:40 | |
| | 10:00-11:15 | CCI 3*-S |
| | 11:35-12:10 | CCI 3*-S |
| | 13:00-14:10 | CCI 3*-S |
| | 14:30-15:25 | CCI 3*-S |
| | 15:45-16:55 | CCI 3*-S CCI2*-L |
| RING 6/7 - RING C | 10:05-11:15 | CCI 3*-L |
| | 11:35-12:10 | CCI 3*-L |

PROVISIONAL COMPETITION SCHEDULE

FRIDAY, MAY 10TH

DRESSAGE

| | | |
|--------------------------------|-------------|----------|
| INTERNATIONAL STADIUM - RING A | 8:30-9:40 | CCI 4*-L |
| | 10:00-10:35 | CCI 4*-L |
| INTERNATIONAL STADIUM - RING B | 8:30-9:40 | CCI 2*-L |
| RING 6/7- RING C | 8:30-9:40 | CCI 1* |
| | 10:00-10:55 | CCI 1* |
| | 11:15-12:25 | CCI 2*-S |
| | 13:10-13:40 | CCI 2*-S |

SHOW JUMPING

| | | |
|-----------------------|-------------|----------|
| INTERNATIONAL STADIUM | 13:00-13:50 | CCI 4*-S |
| | 14:40-16:05 | CCI 3*-S |

SATURDAY, MAY 11TH

CROSS-COUNTRY

| | | |
|------------------|-------------|----------|
| WHITE OAK COURSE | 8:30-9:45 | CCI 4*-S |
| | 10:20-12:20 | CCI 4*-L |
| | 12:45-13:35 | CCI 3*-L |
| | 14:15-16:25 | CCI 3*-S |
| | 16:50-17:50 | CCI 2*-L |

SHOW JUMPING

| | | |
|-----------------------|------------|----------|
| INTERNATIONAL STADIUM | 8:00-9:15 | CCI 2*-S |
| | 9:50-10:25 | CCI 1* |

A rider in a purple long-sleeved shirt, white breeches, and a blue helmet is jumping a brown horse over a red and white fence. The horse is in mid-air, and there is a large, semi-transparent watermark of the word "JOY" overlaid on the image. The background is blurred, showing a field and a fence.

JOIN THE

at USequestrian.org



*Bringing the joy of horse sports to as many people as possible.
Become a member today.*

#JoinTheJoy

PROVISIONAL COMPETITION SCHEDULE

SUNDAY, MAY 12TH

CROSS-COUNTRY

WHITE OAK COURSE

9:30-10:45

CCI 2*-S

11:15-11:50

CCI 1*

SHOW JUMPING

TRYON STADIUM

10:00-10:40

CCI 2*-L

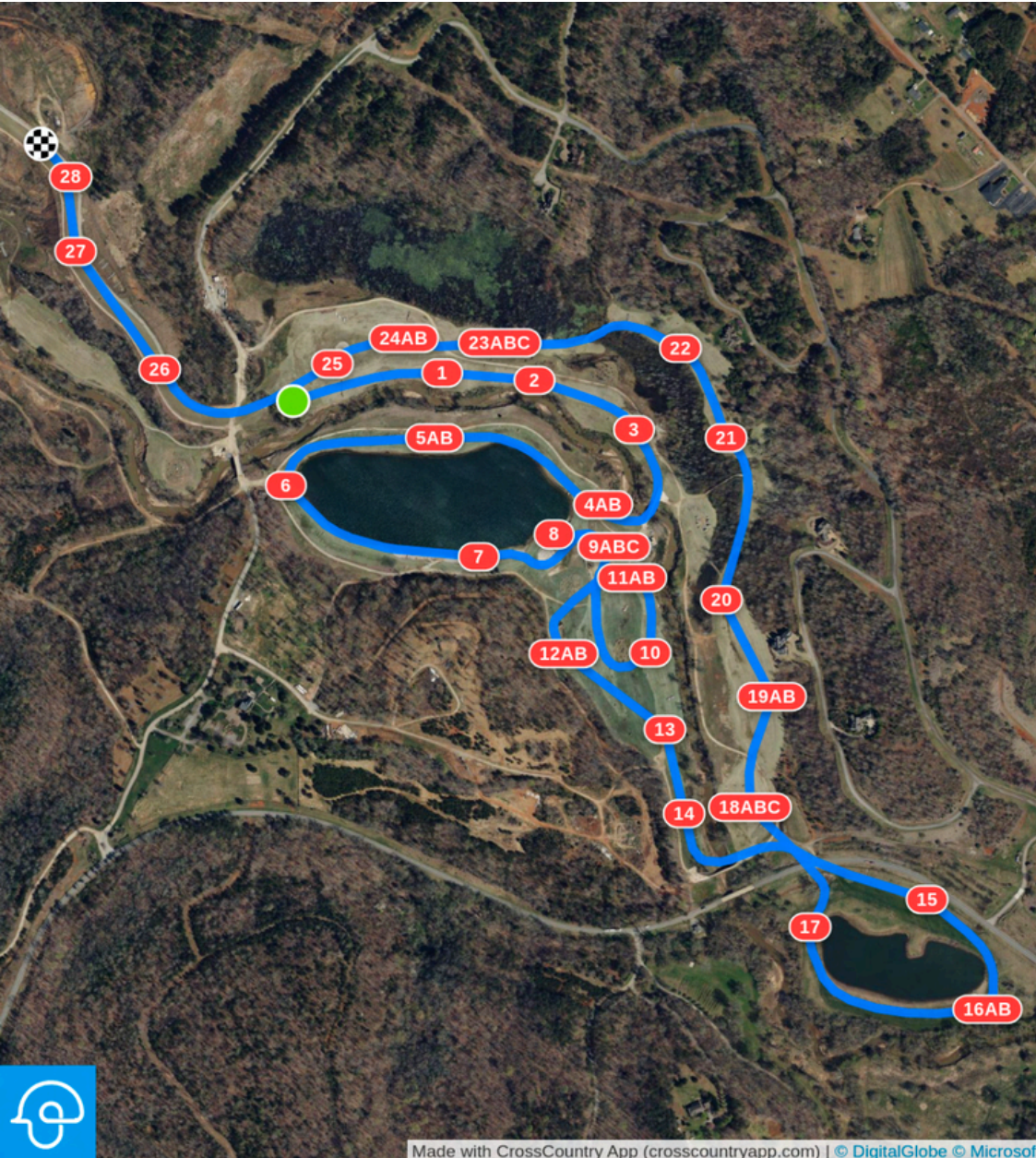
11:40-12:40

CCI 4*-L

13:20-13:40

CCI 3*-L

CCI 4*-L CROSS-COUNTRY MAP



Tryon May 2024 CCI4-L

Blue Square w/white # and Boarder

| | |
|--------------------|------------------|
| Opt. Time: 10m 0s | Distance: 5700 m |
| Time Limit: 20m 0s | Speed: 570 m/min |

- 1 Fork Roll
- 2 MIM Oxer
- 3 Cleghorn
- 4AB Mansion Houses
- 5AB Trakehner to Squirrels
- 6 Double Brush
- 7 Jetty
- 8 Cabin
- 9ABC Lighthouse Water
- 10 Wedge Brush
- 11AB Coastal Carolina
- 12AB Chimney Rock
- 13 V Brush
- 14 Over Mountain Wall
- 15 Fork Brush Oxer
- 16AB Coffin
- 17 Waterfall
- 18ABC Apple Country
- 19AB Dylan's Dell
- 20 Cedar Triple Brush
- 21 Moonshine
- 22 Hayrack
- 23ABC Bird Feeder Combination
- 24AB Tryon Tables
- 25 Dog Bone
- 26 Cedar Box
- 27 Red Cabin
- 28 Legends

Tryon Cares
Presented by iHeartMEDIA

Mental Health Awareness Month

TRYON
INTERNATIONAL

presented by



LUNCH & LEARN SERIES

May 16:

Biohacking for Ultimate
Mental Health
Performance

May 23:

We are a Work in Progress:
A guide to practicing Self
Compassion for
Perfectionists

May 30:

Finding Your Balance: A
Discussion on Mental
Wellness

LEGENDS CLUB | 12-1PM | LUNCH PROVIDED | TRYON.COM/ALLEVENTS

MENTAL HEALTH AWARENESS MONTH PRESENTED BY PAVILLON

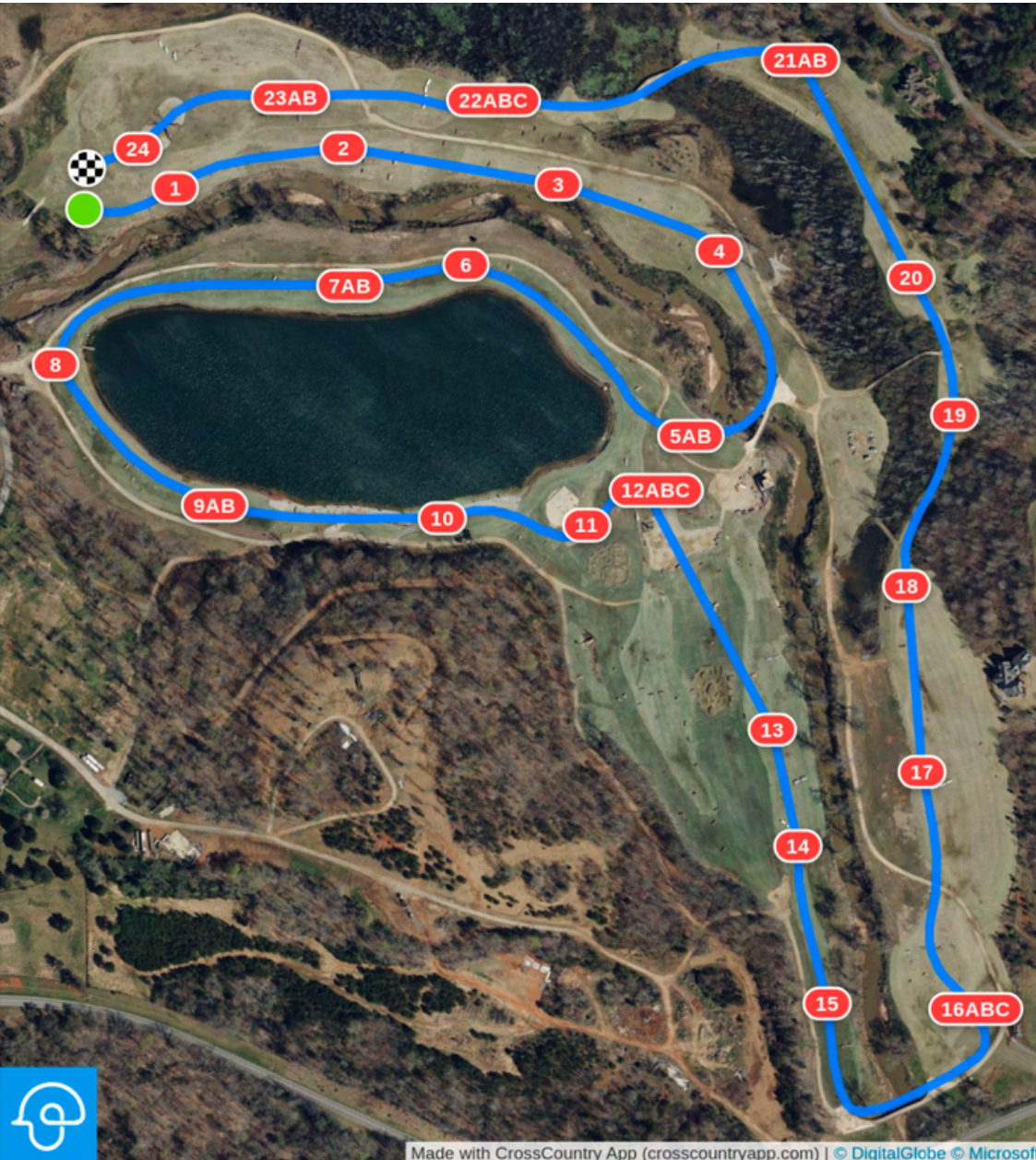
EVERY BRILLIANT THING

BY DUNCAN MACMILLAN
WITH JONNY DONAHOE



May 9 & 10 | 7pm | The Ridge | Tryon.com/AllEvents

CCI 4*-S CROSS-COUNTRY MAP



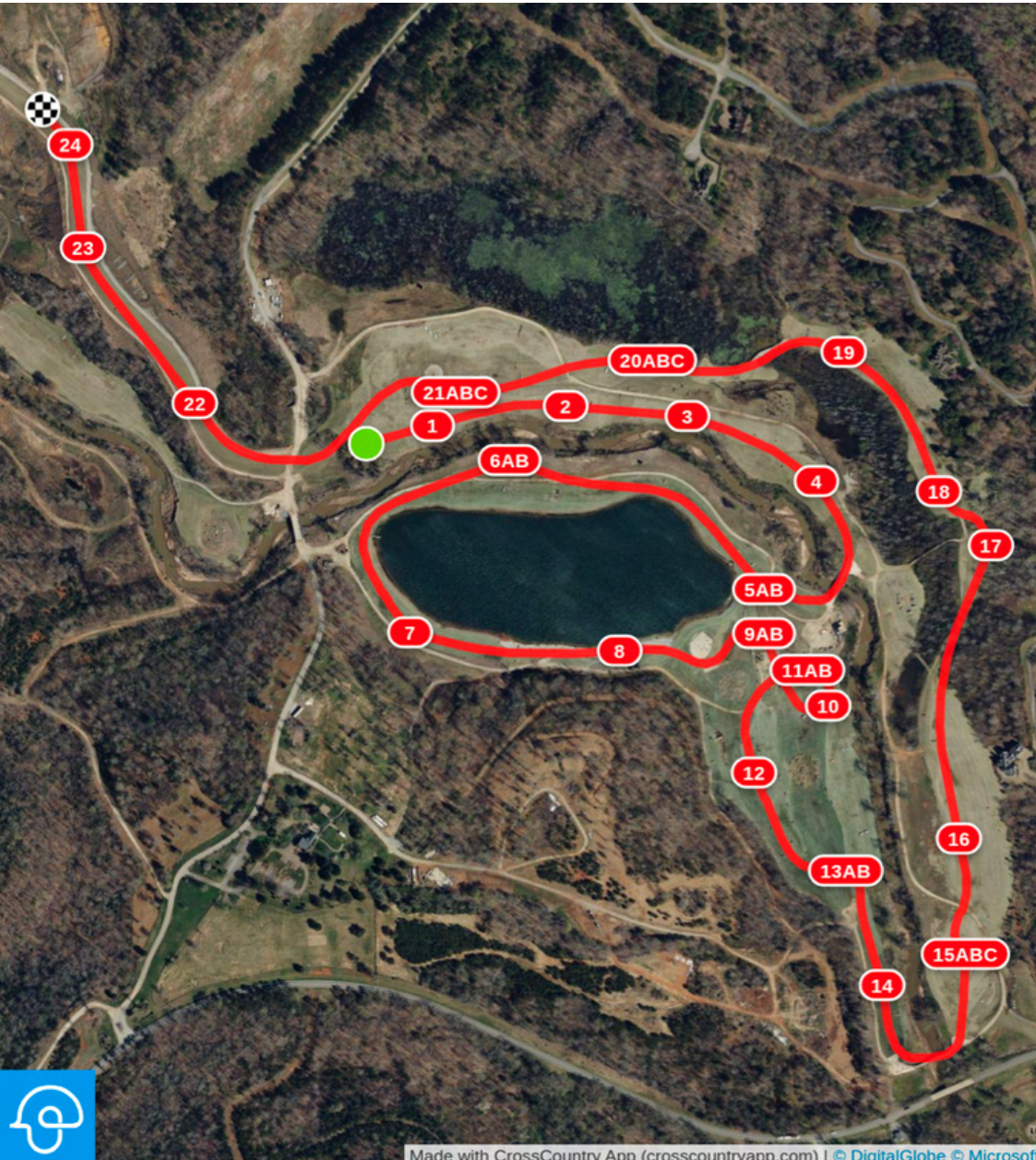
Tryon May 2024 CCI4-S

Blue Square w/white #

| | |
|------------------|---------------------|
| Efforts: 35 | Opt. Time: 6m 20s |
| Distance: 3605 m | Time Limit: 12m 40s |
| Speed: 570 m/min | |

- 1 Cabin
- 2 Fork Roll
- 3 MIM Oxer
- 4 Cleghorn
- 5AB Mansion Houses
- 6 Picnic Table
- 7AB Trakhener to Squirrels
- 8 Double Brush
- 9AB Apple Box to Narrow Cedar Box
- 10 Boat
- 11 Stables
- 12ABC Lighthouse Water
- 13 Aquaduct
- 14 V Ditch
- 15 Over Mountain Wall
- 16ABC Apple Country
- 17 Wagon
- 18 Cedar Triple Brush
- 19 White Roll Table
- 20 Moonshine
- 21AB Beech Tree
- 22ABC Bird Feeder Combination
- 23AB Tryon Tables
- 24 Legends at The Dog Bone

CCI 3*-L CROSS-COUNTRY MAP



Tryon May 2024 CCI3-L

Red Square w/white # and Border

Opt. Time: 8m 33s Distance: 4700 m
Time Limit: 17m 6s Speed: 550 m/min

- 1 Legends Cabin
- 2 Fork Roll
- 3 Cedar Box
- 4 Cleghorn
- 5AB White Roll Table to Blue Rolls
- 6AB Offset Brushes
- 7 Ditch Brush
- 8 Jetty
- 9AB Lighthouse Water
- 10 Stone Triple Brush
- 11AB Coastal Carolina
- 12 MIM Table
- 13AB Blue Moon Crescent to Blue Triple Brush
- 14 Wagon
- 15ABC Apple Country
- 16 Aquaduct
- 17 Hanging Log
- 18 Moonshine
- 19 Trakhener
- 20ABC Bird Feeder Combination
- 21ABC Dog Bone
- 22 White Table
- 23 Red Cabin
- 24 Legends

THE UNITED STATES EQUESTRIAN TEAM FOUNDATION

GLADSTONE · NEW JERSEY · UNITED STATES



Philanthropic Partner of US Equestrian



*Supporting Athletes
Promoting International Excellence
Building for the Future*

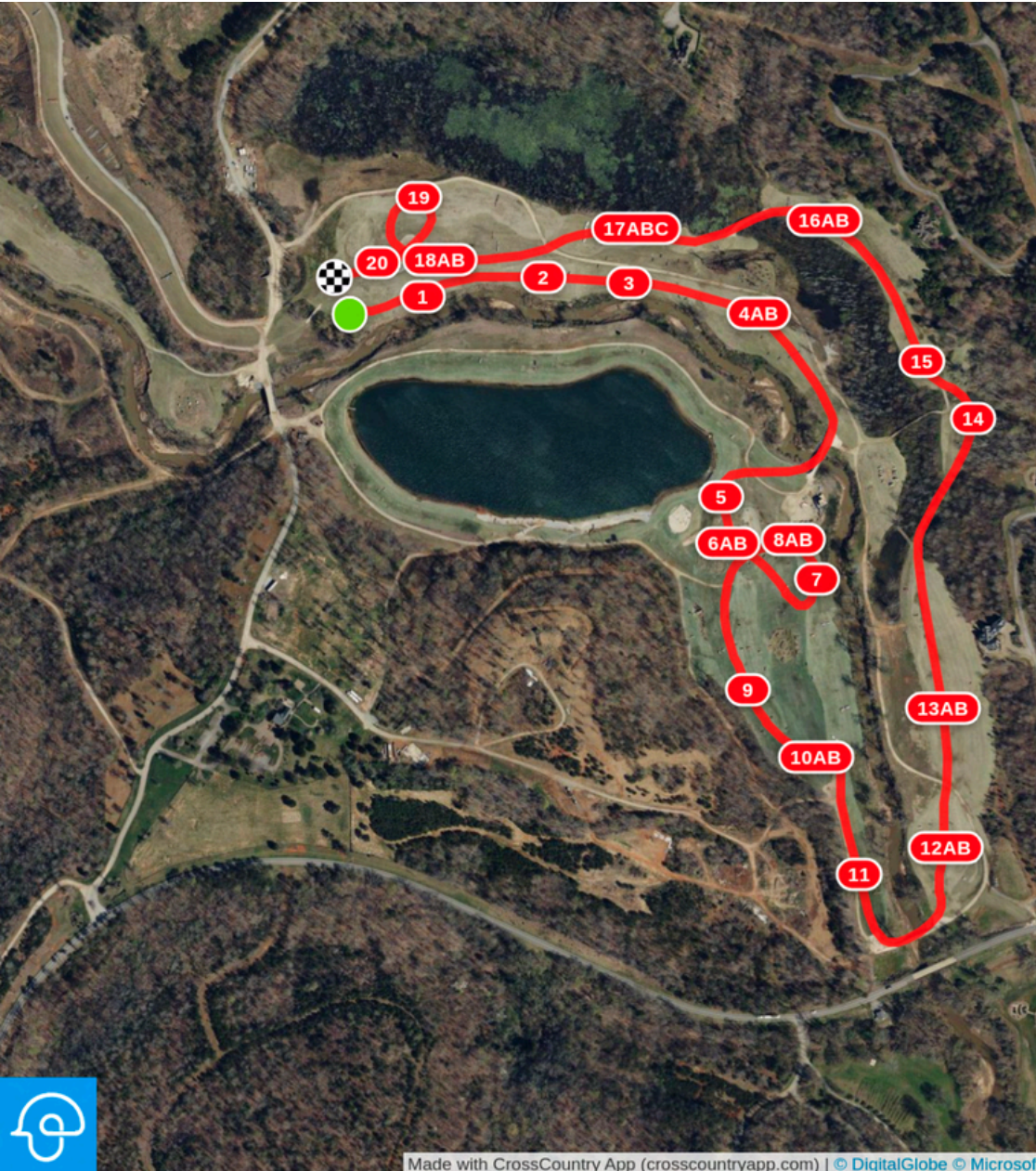
Join the Team at USET.org

(908) 234-1251

Follow the Ride



CCI 3*-S CROSS-COUNTRY MAP



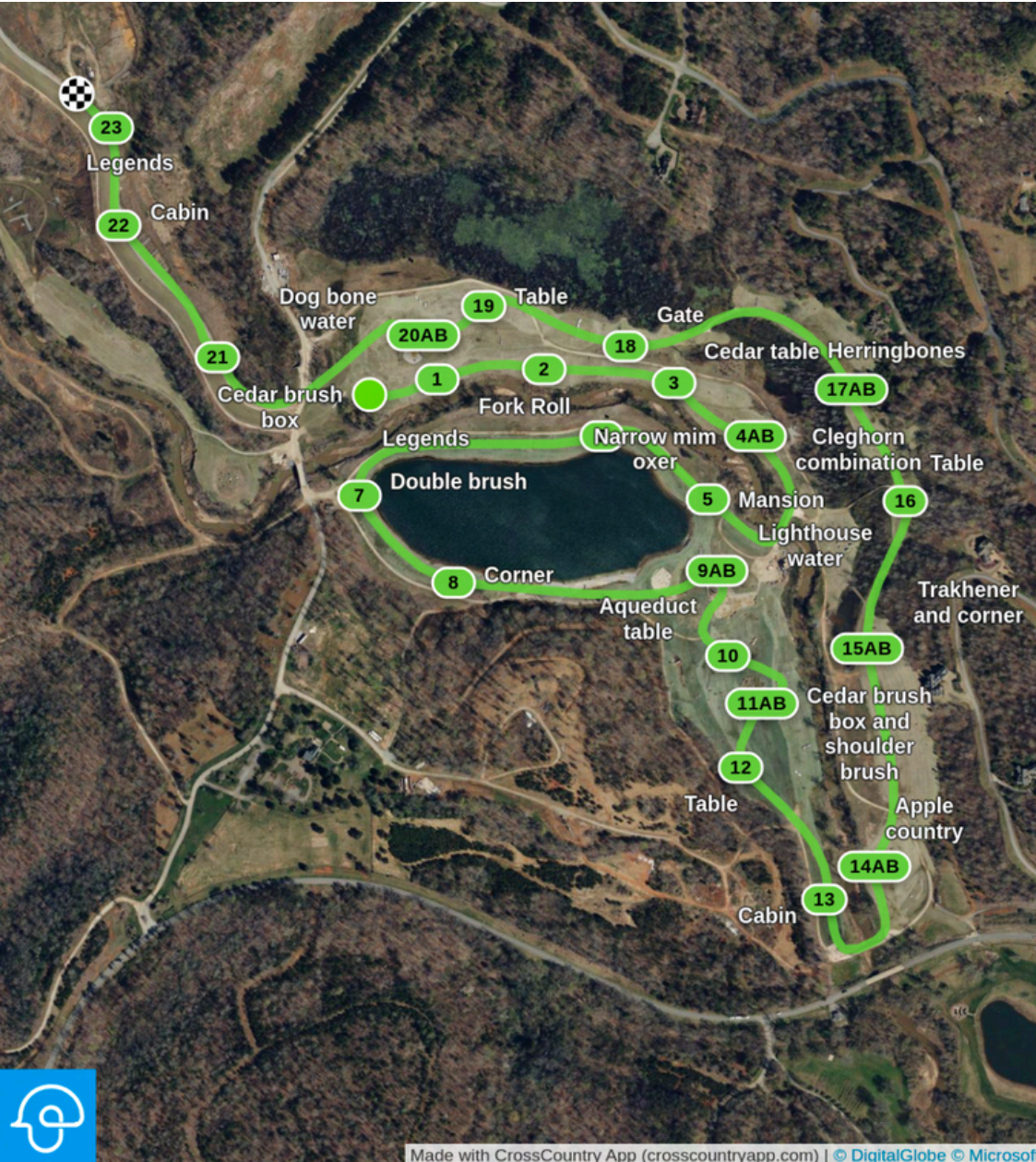
Tryon May 2024 CCI3-S

Red Square w/white #

Opt. Time: 5m 33s
Distance: 3230 m
Time Limit: 11m 6s
Speed: 550 m/min

- 1 Legends Cabin
- 2 Fork Roll
- 3 Cedar Box
- 4AB Cleghorn
- 5 Boathouse
- 6AB Lighthouse Water
- 7 Stone Triple Brush
- 8AB Coastal Carolina
- 9 MIM Table
- 10AB Blue Moon Crescent to Triple Brush
- 11 Wagon
- 12AB Apple Country
- 13AB Double Brush to Triple Brush
- 14 Hanging Log
- 15 Moonshine
- 16AB MIM Oxer to Trakhener
- 17ABC Bird Feeder Combination
- 18AB Dog Bone
- 19 Tryon Table
- 20 Legends at The Dog Bone

CCI 2*-L CROSS-COUNTRY MAP



Tryon May 2024 2*L

Green Square w/white # & Border

| | |
|------------------|---------------------|
| Efforts: 30 | Opt. Time: 8m 27s |
| Distance: 4396 m | Time Limit: 16m 54s |
| Speed: 520 m/min | |

- 1 Legends
- 2 Fork Roll
- 3 Cedar table
- 4AB Cleghorn combination
- 5 Mansion
- 6 Narrow mim oxer
- 7 Double brush
- 8 Corner
- 9AB Lighthouse water
- 10 Aqueduct table
- 11AB Cedar brush box and shoulder brush
- 12 Table
- 13 Cabin
- 14AB Apple country
- 15AB Trakhener and corner
- 16 Table
- 17AB Herringbones
- 18 Gate
- 19 Table
- 20AB Dog bone water
- 21 Cedar brush box
- 22 Cabin
- 23 Legends

TRYON
INTERNATIONAL

MOTHER'S DAY

Brunch

Sunday, May 12 | 10am-3pm

Legends Club | Tryon.com/AllEvents

TRYON WESTERN ADVENTURES

Presented by



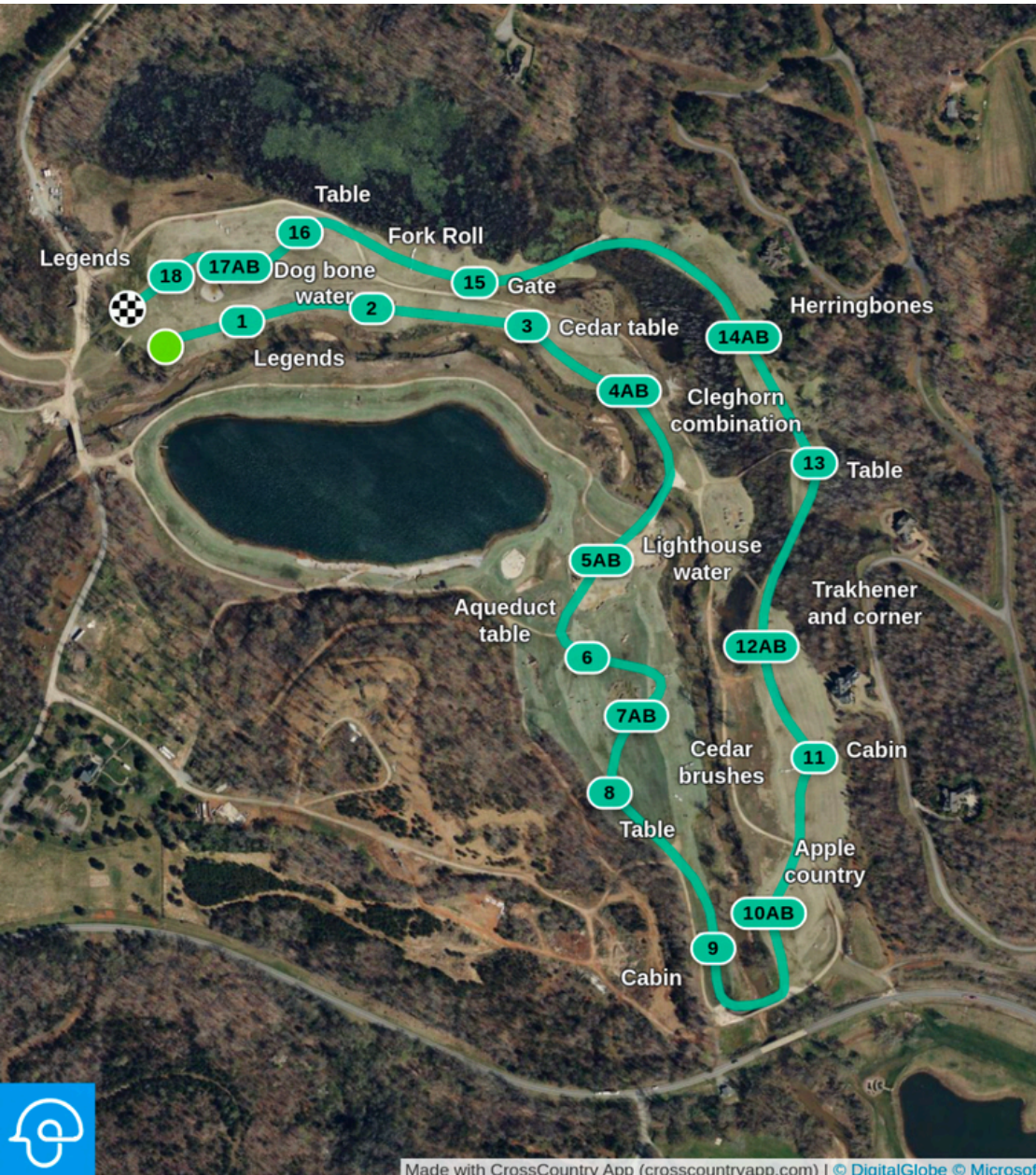
→ Tryon.com/Adventure



Explore Tryon
International on
Horseback Year-Round



CCI 2*-S CROSS-COUNTRY MAP



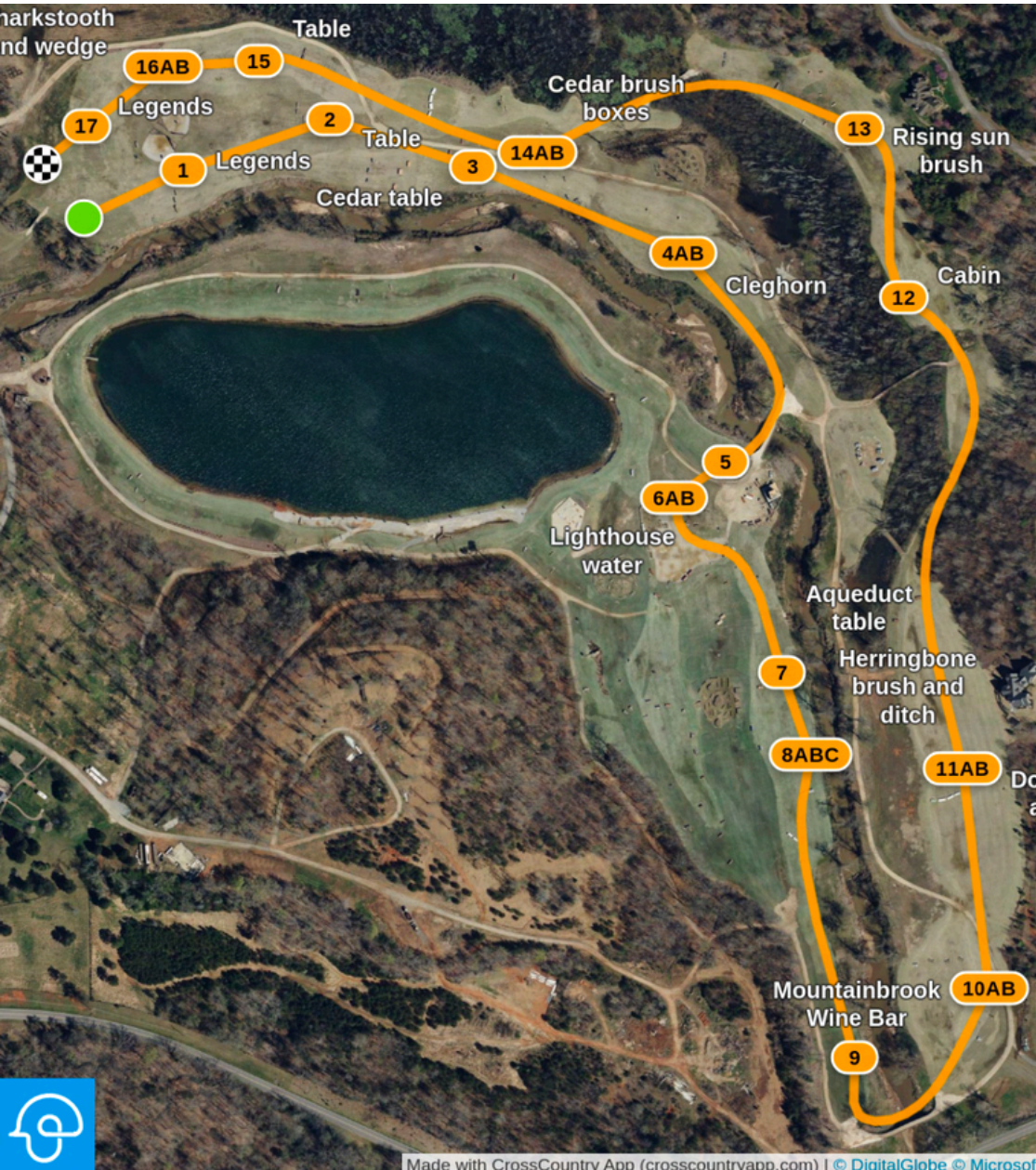
Tryon May 2024 2*S

Green Square w/White #

Efforts: 25
 Opt. Time: 5m 22s
 Distance: 2790 m
 Time Limit: 10m 44s
 Speed: 520 m/min

- 1 Legends
- 2 Fork Roll
- 3 Cedar table
- 4AB Cleghorn combination
- 5AB Lighthouse water
- 6 Aqueduct table
- 7AB Cedar brushes
- 8 Table
- 9 Cabin
- 10AB Apple country
- 11 Cabin
- 12AB Trakhener and corner
- 13 Table
- 14AB Herringbones
- 15 Gate
- 16 Table
- 17AB Dog bone water
- 18 Legends

CCI 1* CROSS-COUNTRY MAP



Made with CrossCountry App (crosscountryapp.com) | © DigitalGlobe © Microsoft

Tryon May 2024 1*

Purple square w/Orange #

Efforts: 25
 Opt. Time: 5m 24s
 Distance: 2700 m
 Time Limit: 10m 48s
 Speed: 500 m/min

- 1 Legends
- 2 Table
- 3 Cedar table
- 4AB Cleghorn
- 5
- 6AB Lighthouse water
- 7 Aqueduct table
- 8ABC Herringbone brush and ditch
- 9 Mountainbrook Wine Bar
- 10AB Apple Country
- 11AB Double brush and brush corner
- 12 Cabin
- 13 Rising sun brush
- 14AB Cedar brush boxes
- 15 Table
- 16AB Sharkstooth and wedge
- 17 Legends

SATURDAY NIGHT LIGHTS



FREE FAMILY FUN

LIVE MUSIC, KIDS ACTIVITIES, SHOPPING, RESTAURANTS, AND THRILLING EQUESTRIAN SPORT

2024 DATES:

MAY

4

11

18

25

JUNE

1

8

29

JULY

6

13

20

SEPT.

21

28

OCT.

5

12

19

26

TRYON INTERNATIONAL EQUESTRIAN CENTER
25 INTERNATIONAL BLVD,
MILL SPRING, NC 28756

THE FEI CODE OF CONDUCT FOR THE WELFARE OF THE HORSE

The Fédération Equestre Internationale (FEI) expects all those involved in international equestrian sport to adhere to the FEI's Code of Conduct and to acknowledge and accept that at all times the welfare of the horse must be paramount and must never be subordinated to competitive or commercial influences.

1. At all stages during the preparation and training of competition horses, welfare must take precedence over all other demands. This includes good horse management, training methods, farriery and tack, and transportation.
2. Horses and Athletes must be fit, competent and in good health before they are allowed to compete. This encompasses medication use, surgical procedures that threaten welfare or safety, pregnancy in mares and the misuse of aids.
3. Events must not prejudice horse welfare. This involves paying careful attention to the competition areas, ground surfaces, weather conditions, stabling, site safety and fitness of the horse for onward travel after the event.
4. Every effort must be made to ensure that horses receive proper attention after they have competed and that they are treated humanely when their competition careers are over. This covers proper veterinary care, competition injuries, euthanasia and retirement.
5. The FEI urges all involved with the sport to attain the highest levels of education in their areas of expertise.

The Long version of this Code can be obtained from the Fédération Equestre Internationale, HM King Hussein I Building, Chemin de la Joliette 8, 1006 Lausanne, Switzerland. Telephone: +41 21 310 47 47. The Code is available in English. The Code is also available on the FEI's website: <https://inside.fei.org/fei/regulations/general-rules>.